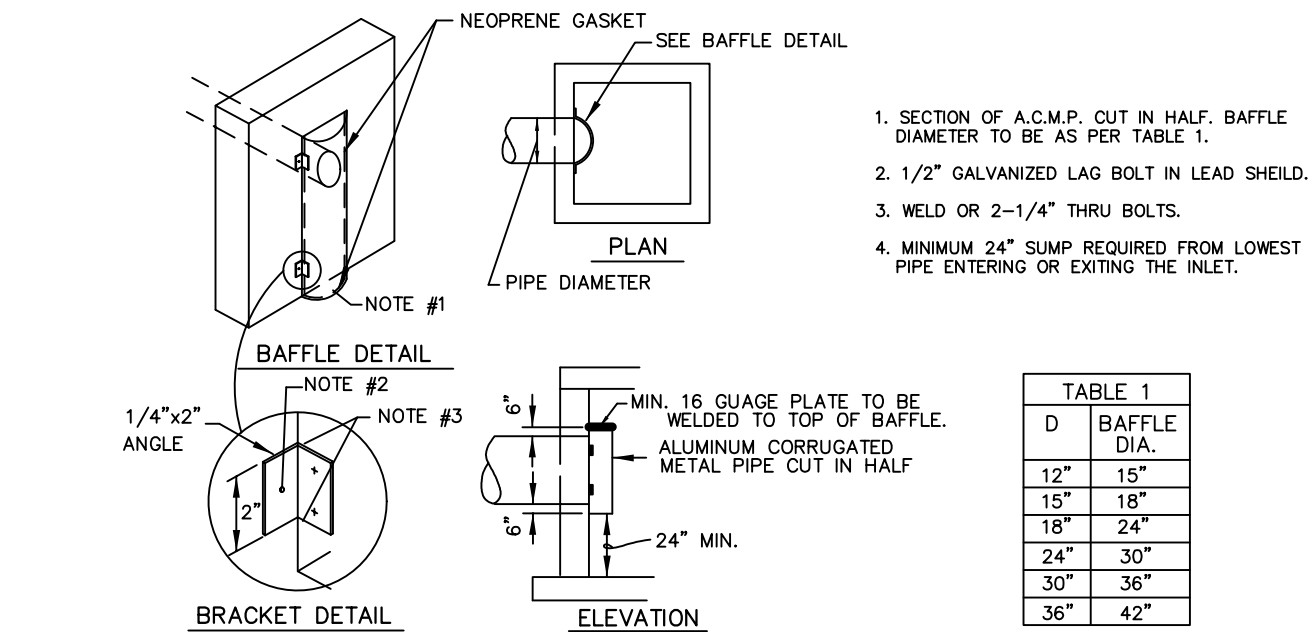
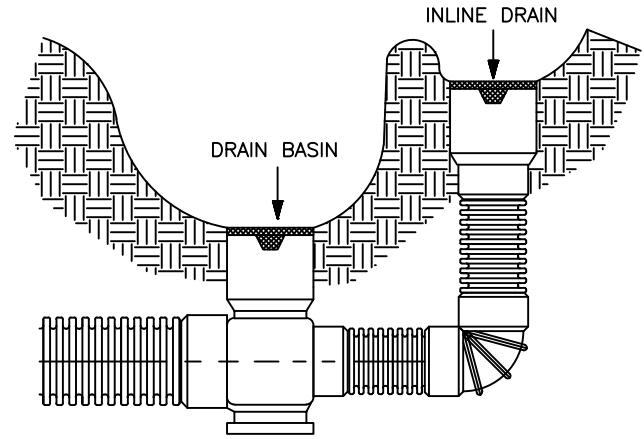
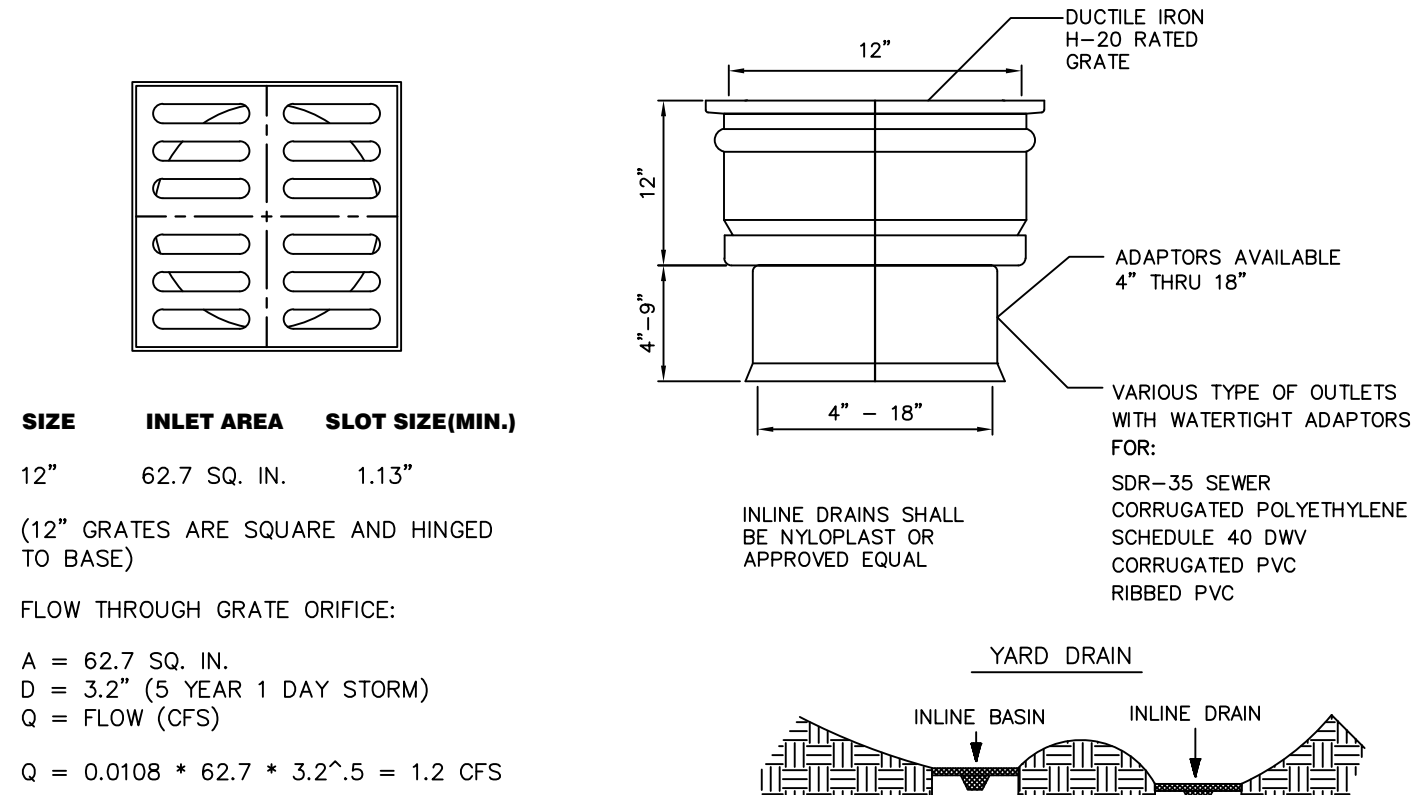


C:\Users\matg\OneDrive - SDA Engineering\Documents - SDA Engineering\Cad\Eng\1136A.00 Atlantic One - Pompano Mixed Use\1136A.00 Atlantic One\PGD Details.dwg, 6/10/2024 4:03:02 PM



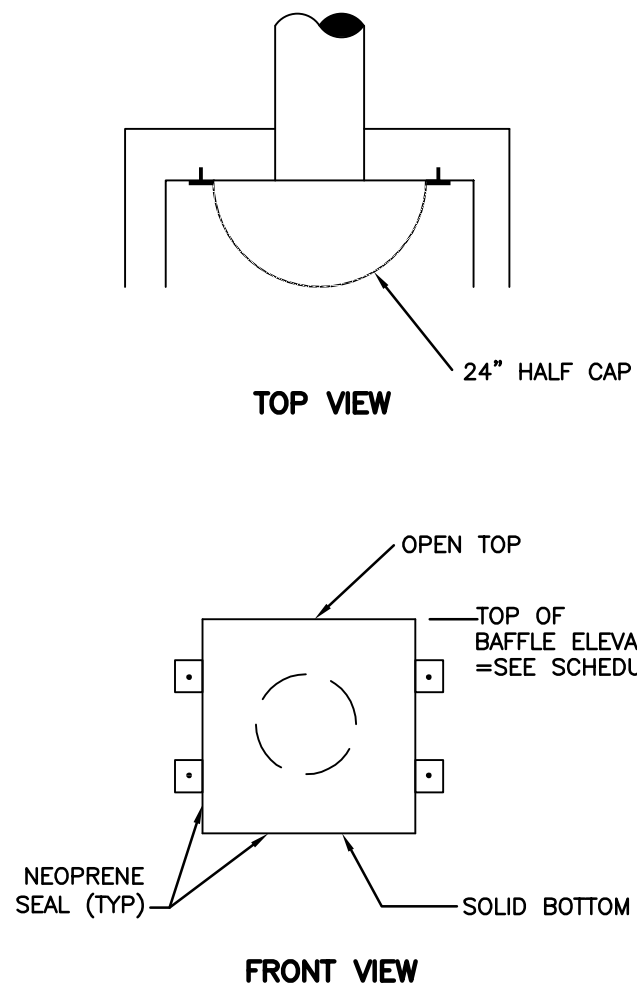
POLLUTION RETARDANT BAFFLE



YARD COLLECTION SYSTEMS

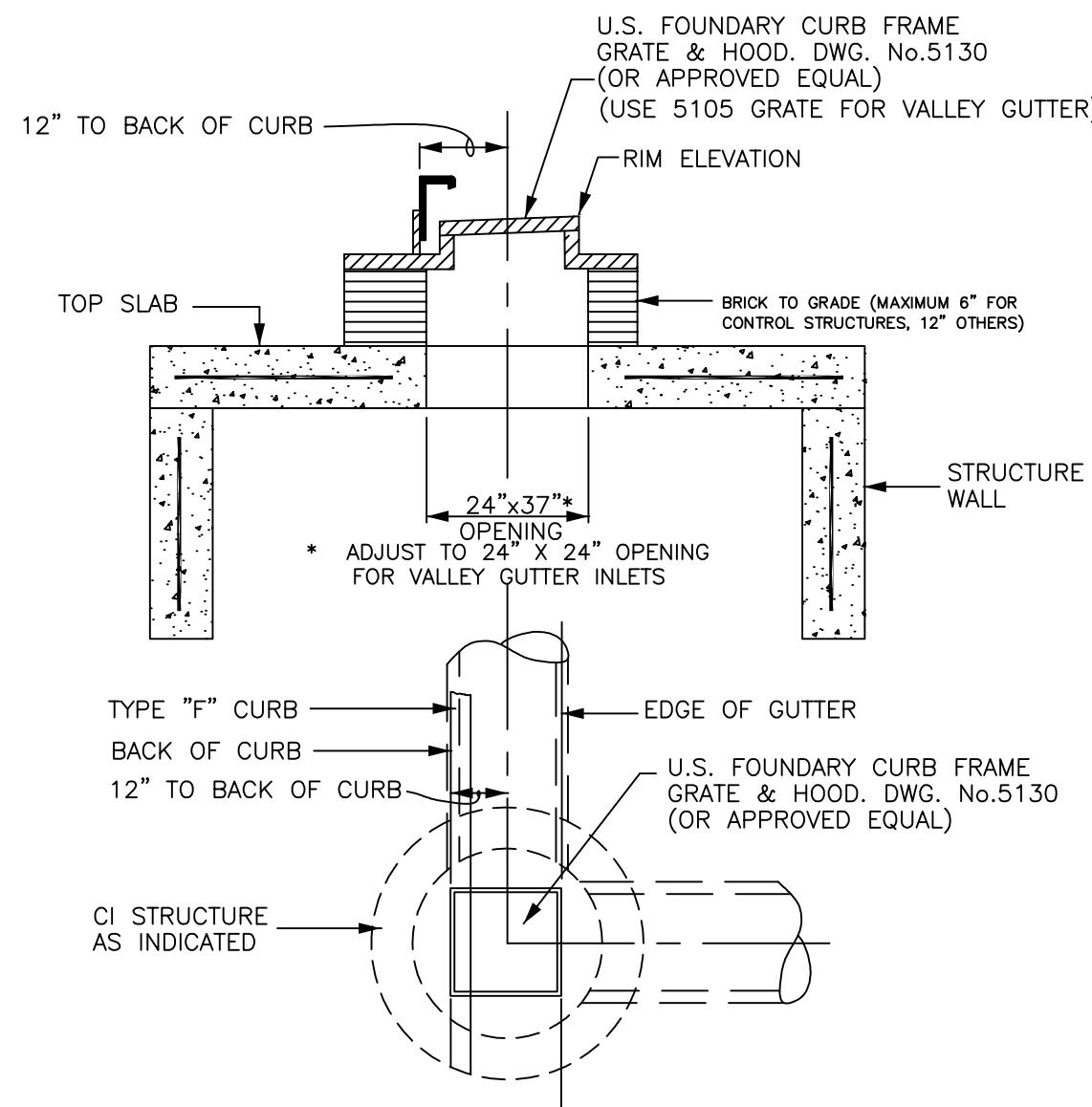
- NOTES :
- YARD DRAINS SHALL ONLY BE USED IN PRIVATE PROPERTY LOCATIONS; PUBLIC RIGHT-OF-WAY LOCATIONS WILL NOT BE PERMITTED.
  - SEE "TYPICAL TRENCH DETAIL" FOR BACKFILLING REQUIREMENTS.
  - 2 FT. MINIMUM COVER IS REQUIRED OVER PIPE IN GREEN AREAS.
  - 3 FT. MINIMUM COVER IS REQUIRED OVER PIPE IN VEHICULAR USE AREAS.

TYPICAL YARD DRAIN "YD" DETAIL

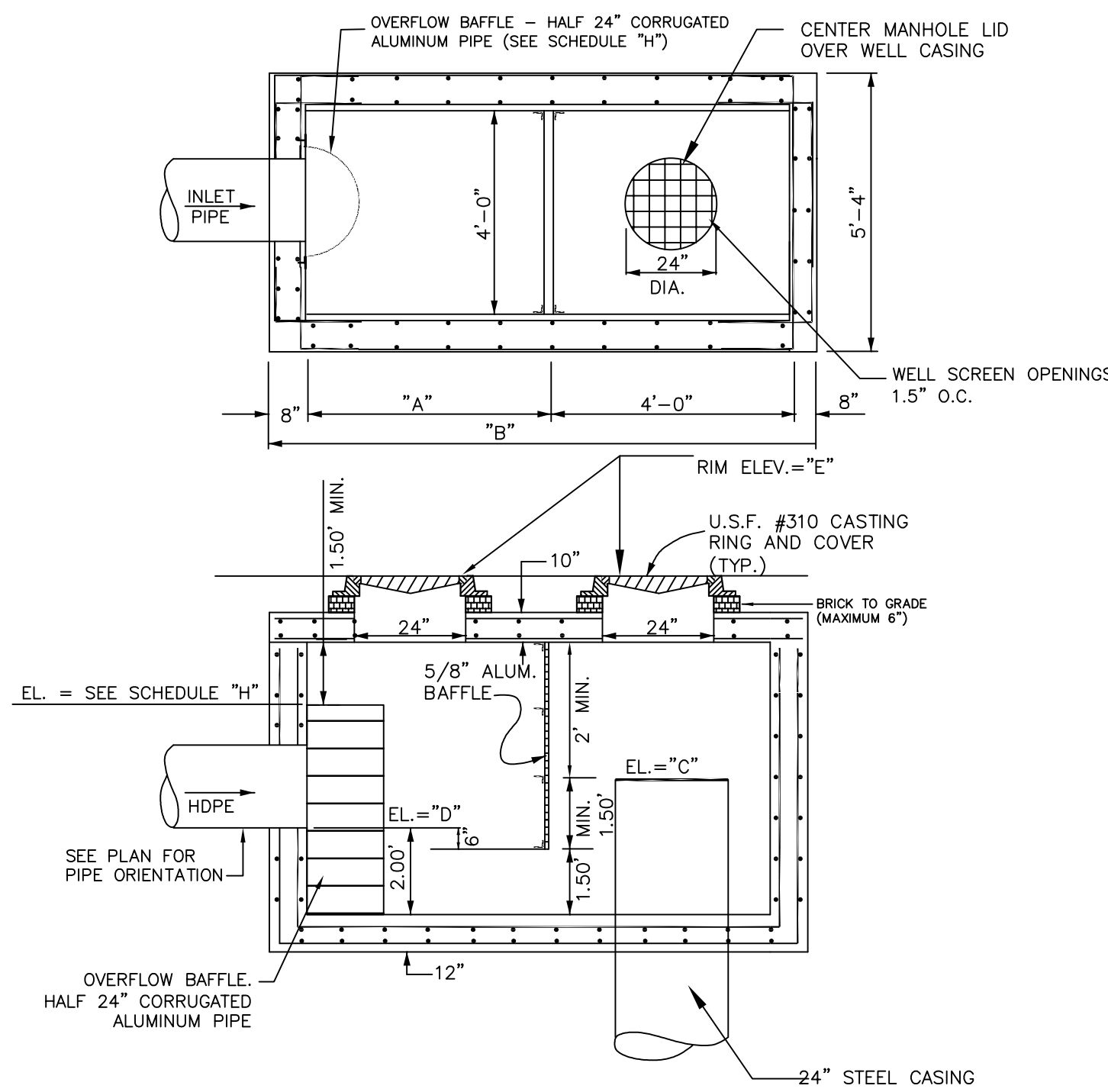


OVERFLOW BAFFLE DETAIL

OVERFLOW BAFFLE SCHEDULE	
CONTROL STRUCTURE	OVERFLOW BAFFLE TOP ELEVATION
STRUCTURE #35	7.00
DRAINAGE WELL #2	7.00 (WELL TOP)
STRUCTURE #37	7.00
DRAINAGE WELL #4	6.50 (WELL TOP)
DRAINAGE WELL #5	6.50 (WELL TOP)
STRUCTURE #47	5.00
STRUCTURE #49	5.00
STRUCTURE #4	7.50
STRUCTURE #8	5.50
STRUCTURE #21	5.50
STRUCTURE #25	4.50
STRUCTURE #31	3.50



CURB INLET - TYPE "CI"

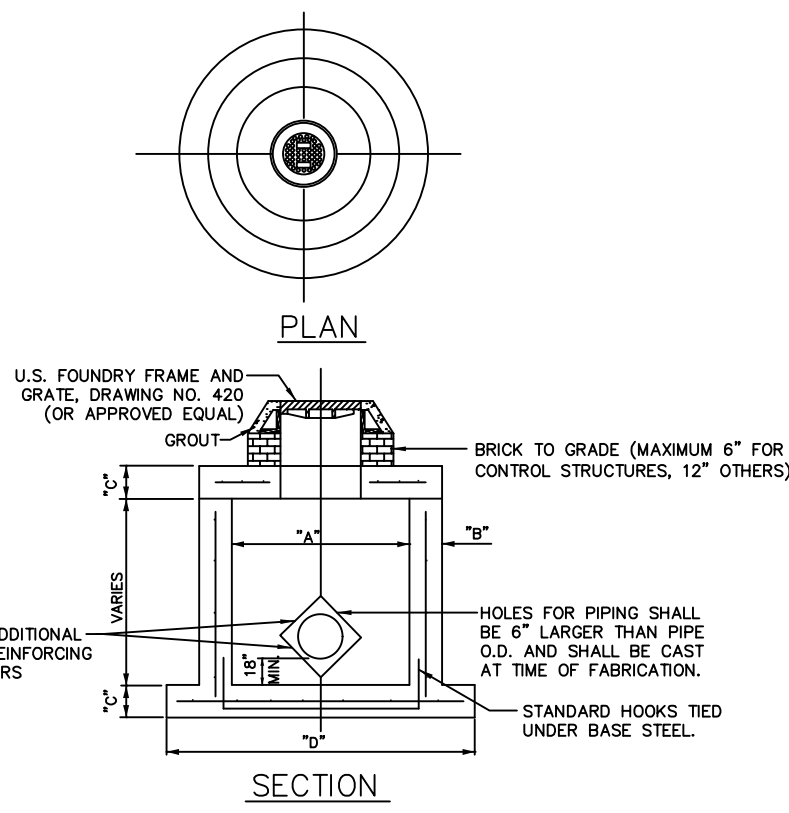


DRAINAGE WELL DETAIL  
N.T.S.

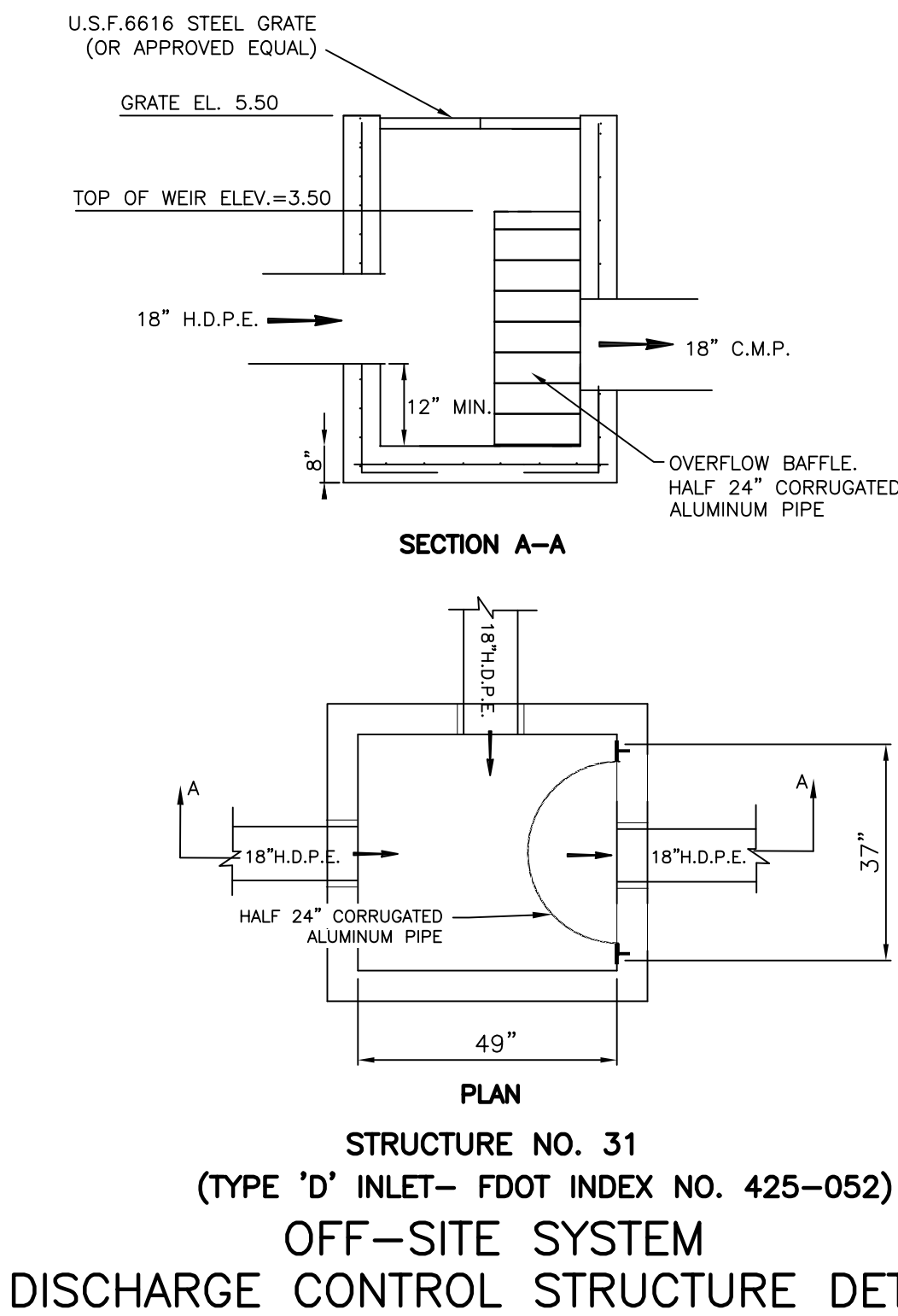
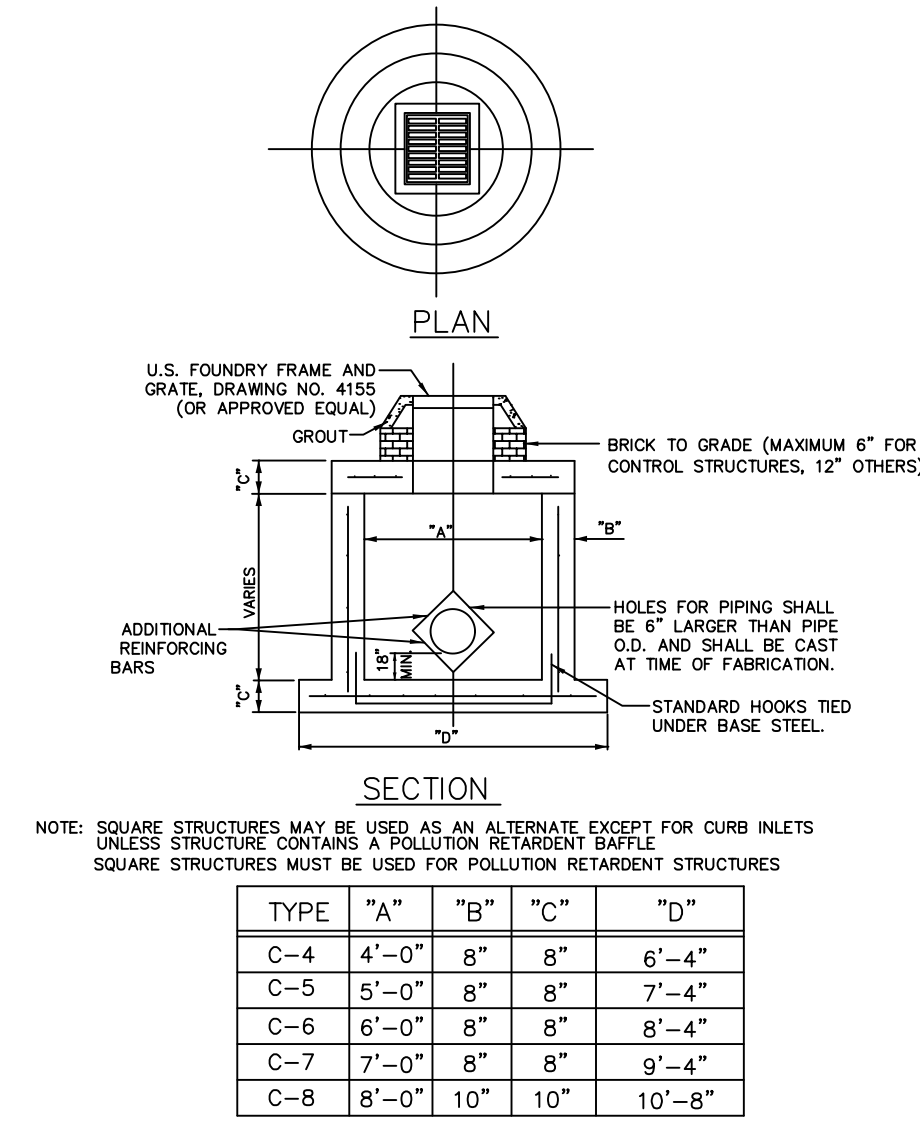
- DRAINAGE WELL NOTES
- WELL CAPACITY (GPM PER FOOT OF HEAD) = "F"
  - MAXIMUM WELL CAPACITY (GPM) = "G"
  - SEE PLAN FOR PIPE ORIENTATION
  - EACH WELL SHALL BE 24" DIAMETER STEEL CASING
  - MUST BE DESIGNED FOR AASHTO H-20 LOADING

DRAINAGE WELL SCHEDULE								
DRAINAGE WELL	"A" DETENTION CHAMBER LENGTH (FT)	"B" STRUCTURE LENGTH (FT)	"C" TOP OF WELL CASING ELEVATION	"D" INVERT ELEVATION OF INFLUENT PIPE	"E" STRUCTURE RIM ELEVATION	"F" WELL CAPACITY (GPM/FT HEAD)	"G" MAX WELL CAPACITY (GPM)	"H" OVERFLOW BAFFLE TOP ELEVATION
#1	4.00	9.33	6.60	5.60	10.60	100	510	N/A
#2	4.00	9.33	7.00	6.00	11.00	100	510	N/A
#3	4.00	9.33	6.50	5.50	10.50	100	510	N/A
#4	4.00	9.33	6.50	5.50	10.90	100	500	N/A
#5	4.00	9.33	6.50	5.40	10.50	100	500	7.00
#6	4.00	9.33	4.00	3.00	8.00	100	200	7.00
#7	4.00	8.33	4.60	3.60	9.60	100	200	N/A

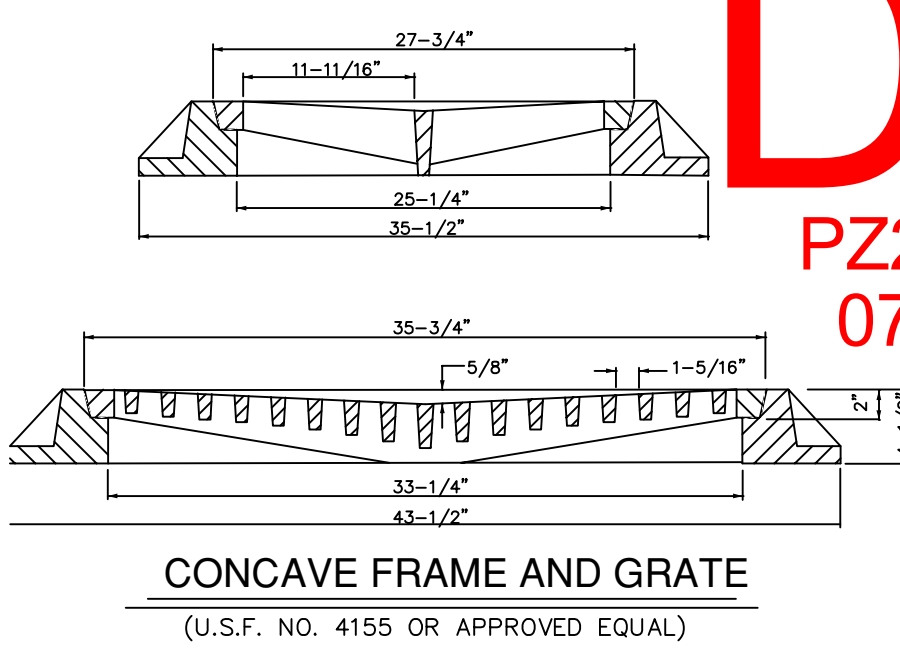
PRECAST DRAINAGE MANHOLE



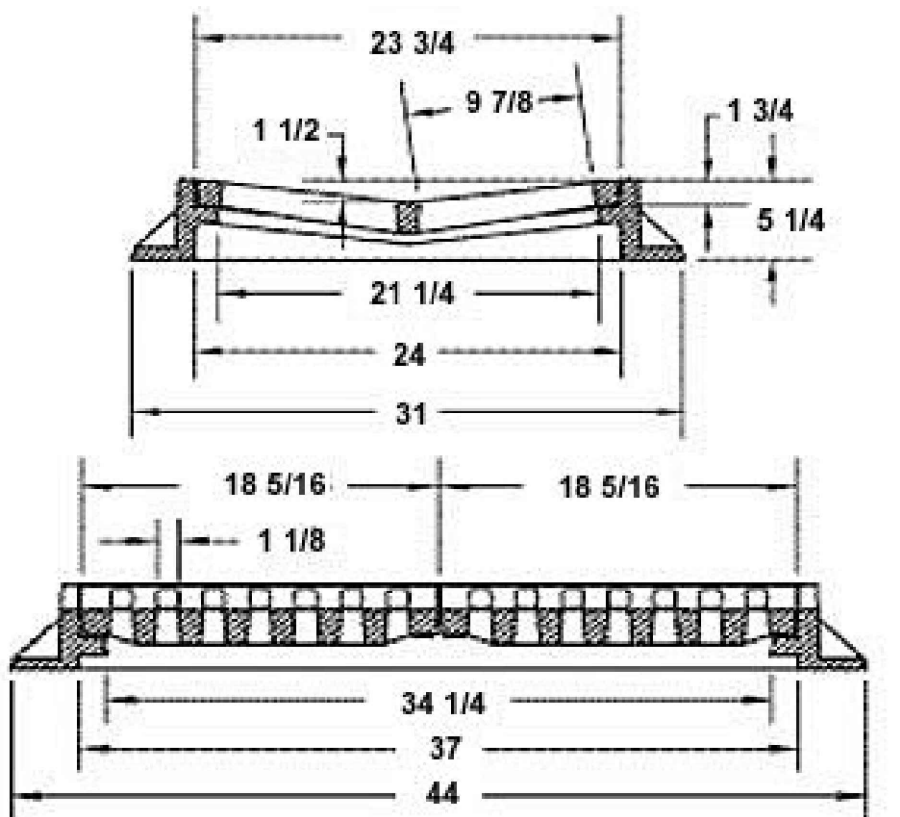
PRECAST CIRCULAR CATCH BASIN



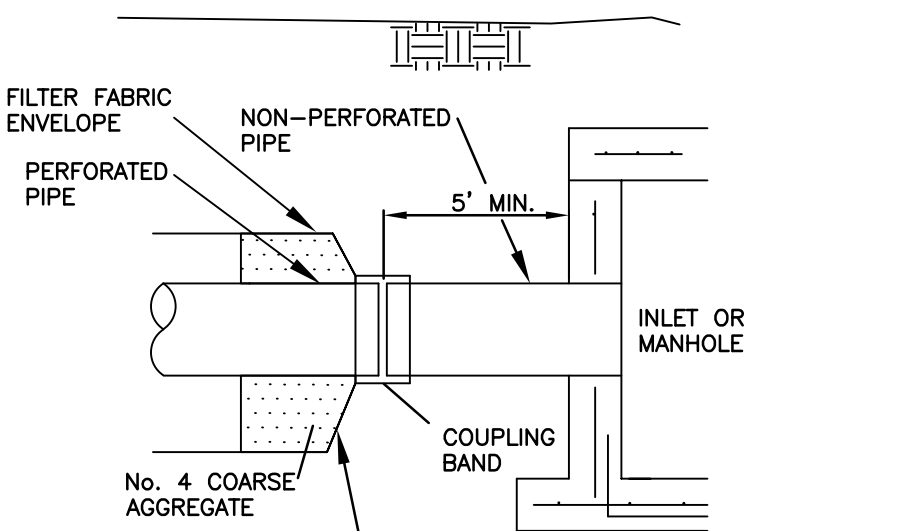
OFF-SITE SYSTEM  
DISCHARGE CONTROL STRUCTURE DETAIL



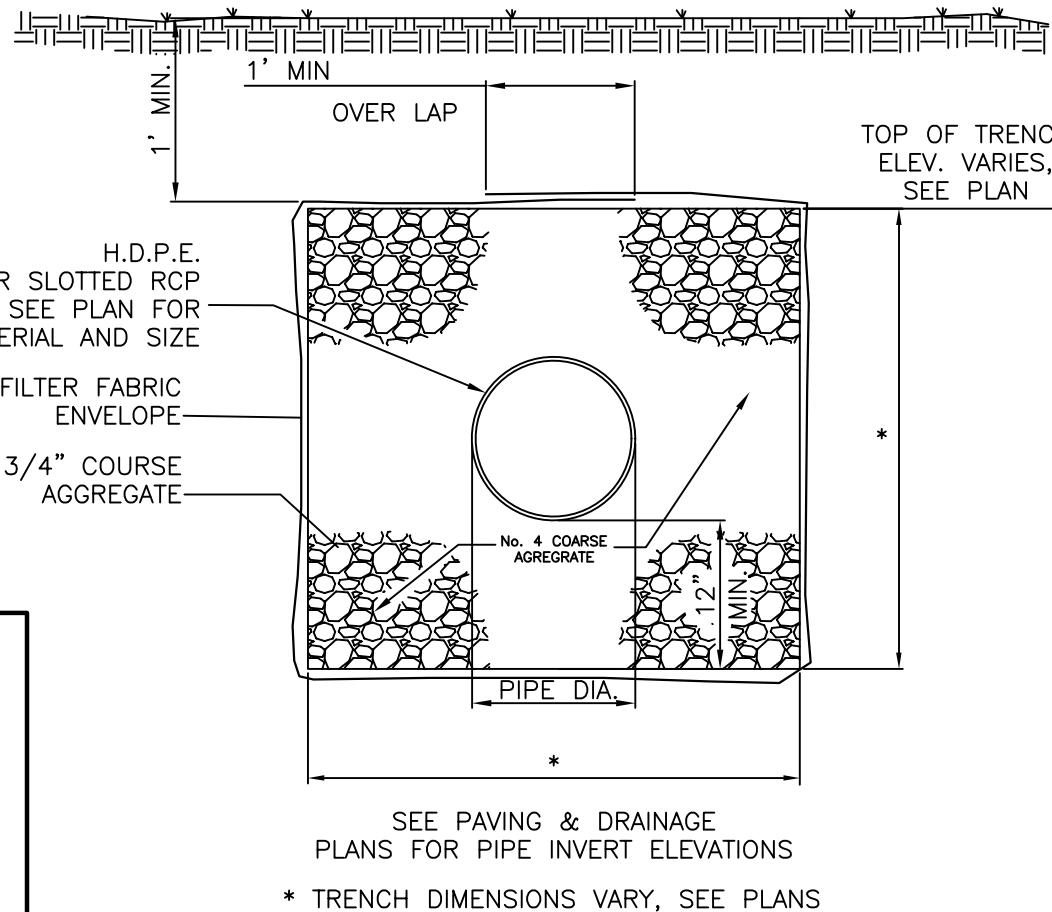
CONCAVE FRAME AND GRATE  
(U.S.F. NO. 4155 OR APPROVED EQUAL)



VALLEY GUTTER INLET FRAME AND GRATES  
FOR GUTTER INLET TYPE "GI"  
(U.S.F. NO. 5113 FRAME, NO. 6194 GRATES OR APPROVED EQUAL)



LONGITUDINAL SECTION  
EXFILTRATION TRENCH



- NOTES:
- PIPES SHALL CONNECT TO ADDITIONAL CATCH BASINS AS REQUIRED
  - BALLAST ROCK SHALL BE FROM FRESH WATER WASHED FREE OF DELETERIOUS MATTER.
  - TRENCH TO BE LINED WITH AMOCO PROPEX 4545 OR APPROVED EQUIVALENT TYPE FILTER FABRIC. OVERLAP TRENCH LINING MATERIAL A MINIMUM OF 2' AT TOP OF TRENCH. CLOSE ENDS AND STRAP AROUND PIPE.

TYPICAL EXFILTRATION TRENCH  
DETAIL

This item has been digitally signed and sealed by Matthew J. Giani on the date on the digital seal.

Printed copies of this document are not considered signed and sealed and the signature must be verified on any electronic copies.



**DRC**  
PZ24-12000011  
07/17/2024

REVISIONS	DESCRIPTION
DATE	BY

**SDA ENGINEERING**  
ENGINEERING • SURVEYING • PLANNING  
ENGINEERING AUTH. NO. 5634 SURVEYING LIC. NO. LB-6456  
3410 N. Andrews Avenue Ext. • Pompano Beach, FL 33064  
PH: 954-943-9433 • FAX: 954-783-4754

DRAWN BY: MJG  
CHECKED BY: JFD  
DESIGNED BY: MJG  
APPROVED BY: S.D.A.  
SCALE: N.T.S.

ATLANTIC ONE  
MIXED-USE DEVELOPMENT  
POMPAHO BEACH, BROWARD COUNTY, FLORIDA  
PAVING, GRADING & DRAINAGE  
DETAILS

SEALED  
FOR THE FIRM BY:  
Digitally signed by  
Matthew J. Giani  
Date: 2024.06.10 16:42:07  
FLA. P.E. No. 84229  
DATE: JUNE 2024  
JOB NO. 1136B.01  
SHEET CE14